

**Fostex F120A Open Baffle and Goldwood GW-1858 H Frame
Two Way Passive Crossover Speaker System**

Martin J. King
40 Dorsman Dr.
Clifton Park, NY 12065
MJKing57@aol.com

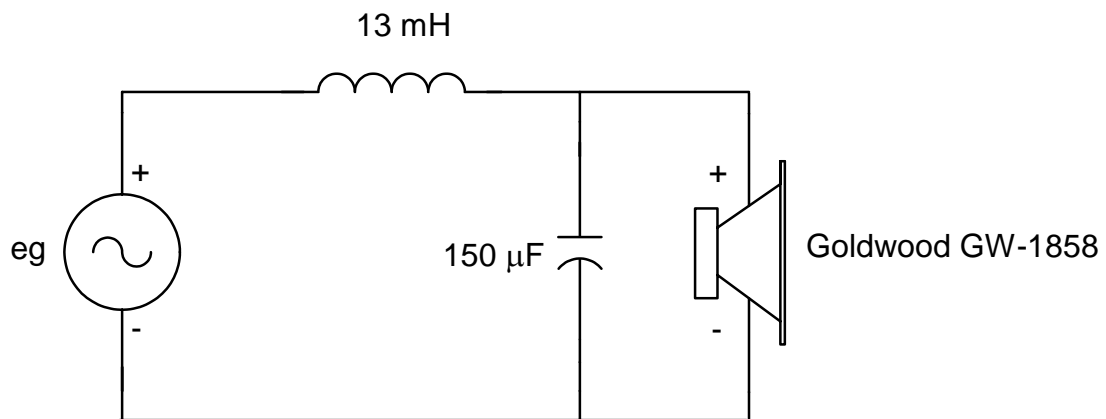
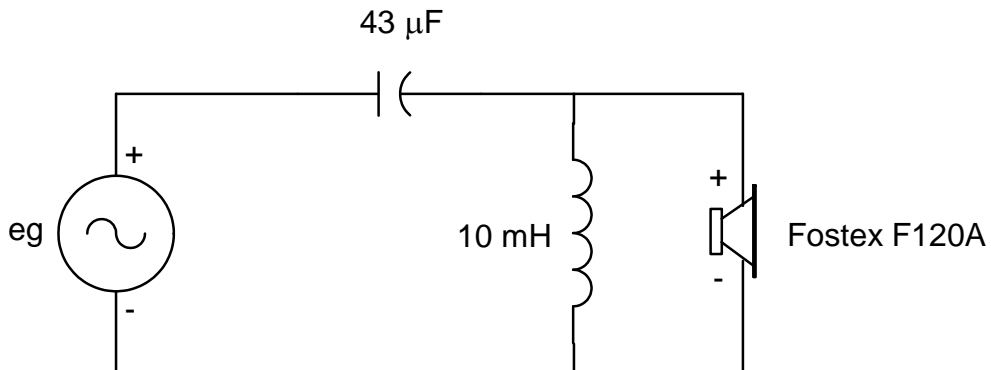
Update :

This is an update to the Jordan Open Baffle and Goldwood H Frame design that shows the changes required to use a Fostex F120A driver in place of the Jordan JX92S driver. The Fostex and the Jordan drivers are very similar and both sound great. I am not sure if one is clearly better than the other. It would be a matter of personal preference in the voicing of the speaker system that would drive a selection between these two driver options.

I configured the active crossover by programming a 2nd order Linkwitz-Riley low pass crossover at 100 Hz with 2.5 dB of boost for the Goldwood woofer and programming a 2nd order Linkwitz-Riley high pass crossover at 250 Hz for the Fostex full range driver. I played with the crossover points and slopes for a while but eventually ended up returning to this configuration as my preferred set-up.

Retaining the Figure numbering from the previous Jordan driver passive crossover article, I have included an updated crossover schematic and parts list as Figure 3. In Figures 7, 8, and 9 the measured impedance, system SPL at 1 m, and system SPL at the listening position are shown and be compared against the same figures in the previous article.

Figure 3 : Crossover Schematics and Parts List



Crossover Cost Calculation		
Low Pass for Goldwood GW-1858		
L1 =	13 mH ERSE Super Q 16 AWG	Unit Cost \$ 25.05
C2 =	150 uF ERSE 400V	\$ 32.60
High Pass for F120A		
C1 =	43 uF ERSE 250V	\$ 10.46
L2 =	10 mH ERSE Super Q 16 AWG	\$ 22.96
http://www.erseaudio.com/		Total Cost = \$ 182.14

Figure 7 : Speaker System Impedance

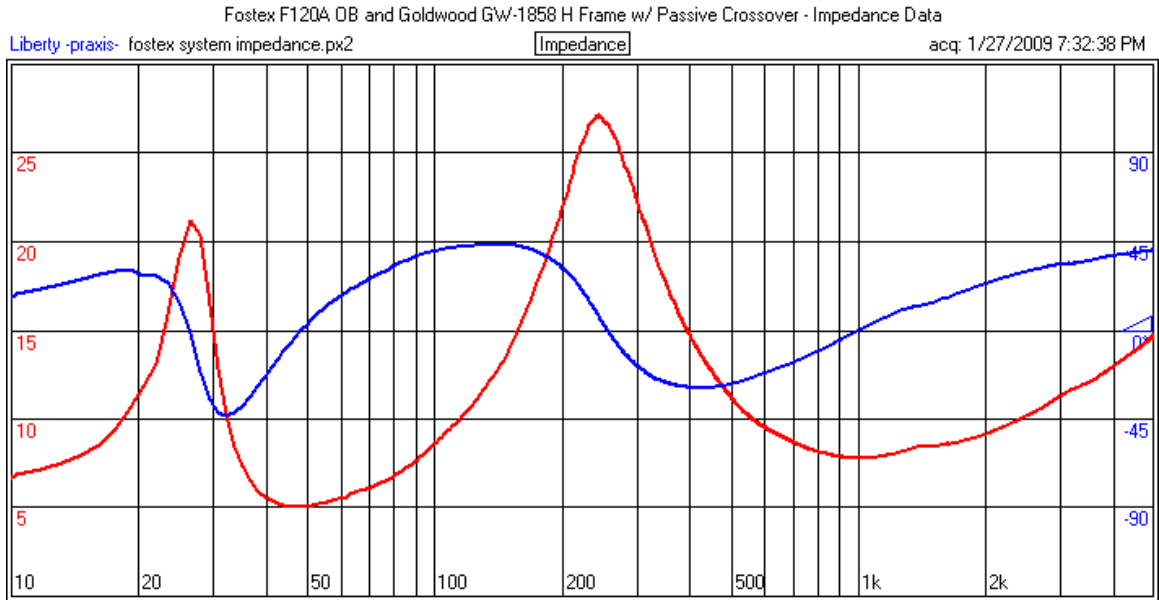


Figure 8 : System SPL at 1 m on the Axis of the Fostex Full Range Driver

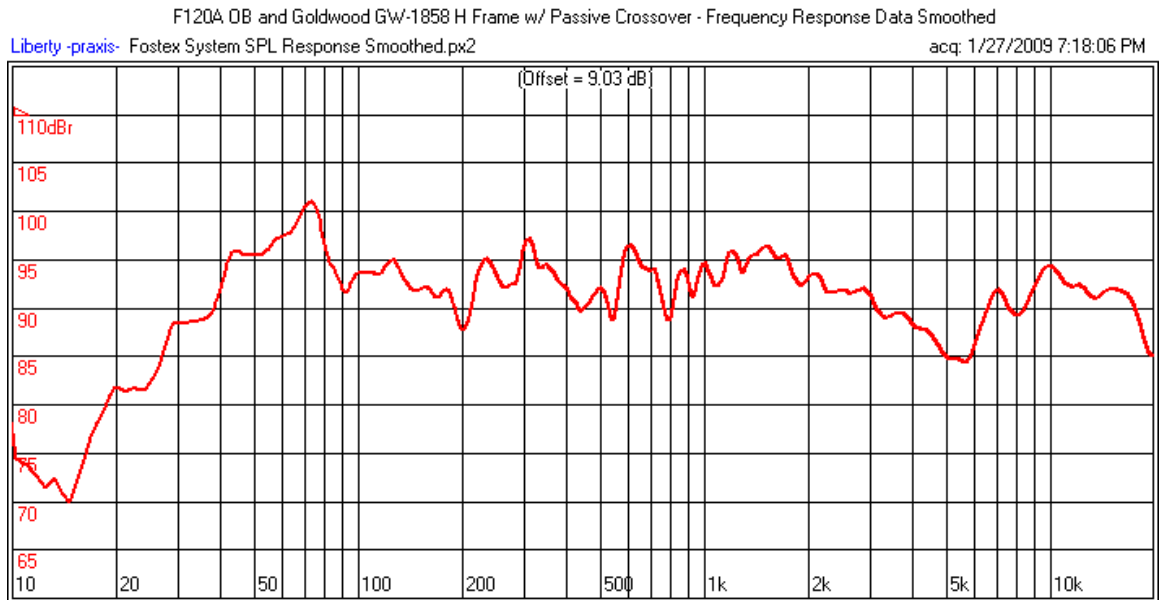


Figure 9 : System SPL at the Listening Position

