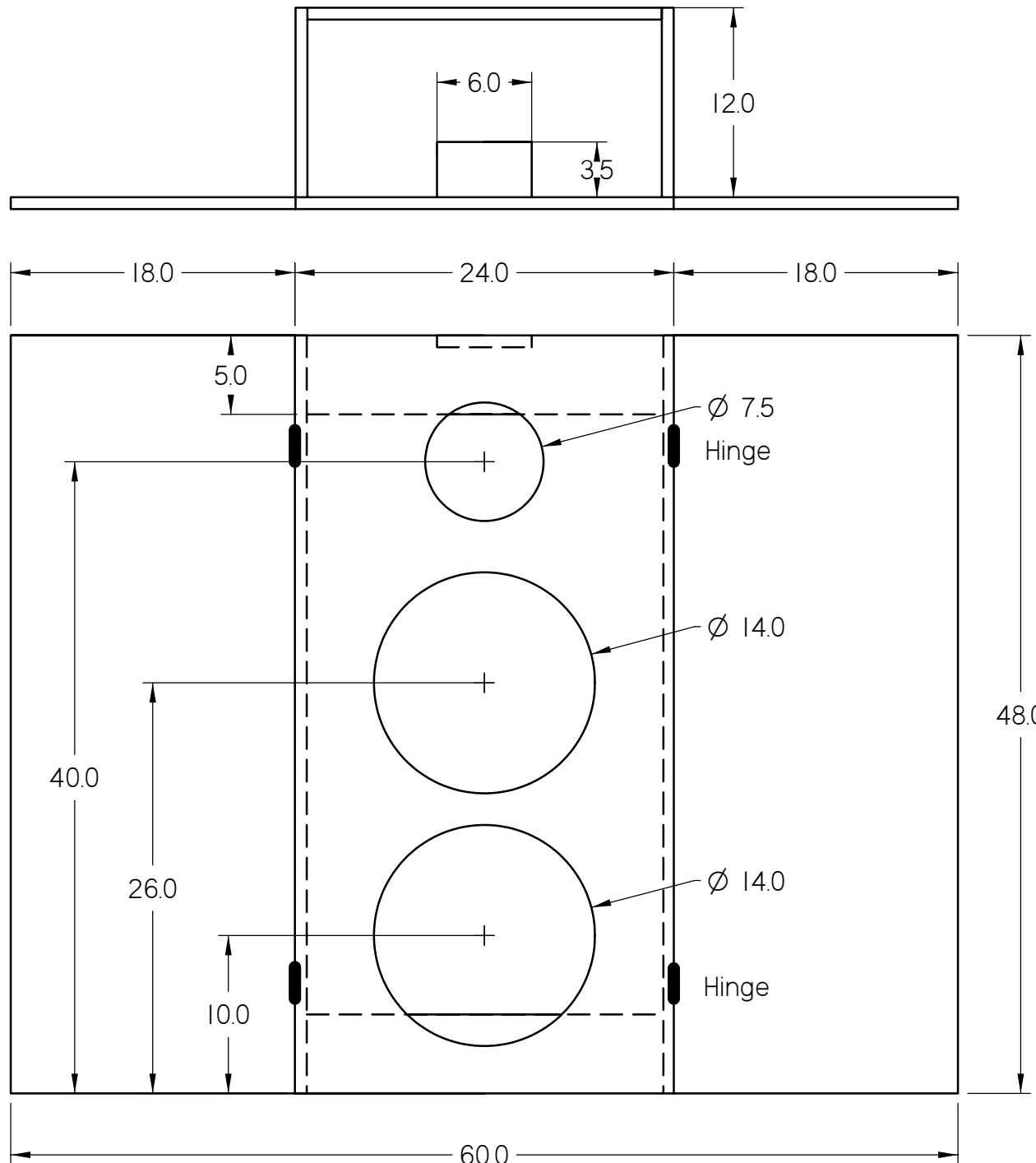


Lowther PM2A w/ Two Dayton Woofers : Open Baffle Speaker System

MJ King
7/03/06



Notes :

1. All panels are 18 mm thick sanded plywood purchased from Home Depot.
2. The center baffle is 24 inches wide and 48 inches tall.
3. Sides run top to bottom along the outside edges of the center baffle and are 12 inches deep.
4. Wings 18 inches wide are attached by two hinges and can be rotated back 90 degrees flush against the sides.
5. The speaker baffle is open at the top and in the back.
6. Two 5 inch cross-braces are used at the top and bottom of the side panels at the very back to keep the structure square, to provide some stiffness, and to hold the speaker wire attachment posts..
7. A 3.5 by 6 inch shelf is attached at the top to allow mounting a super tweeter and also provide some protection for the back of the Lowther cone just below this shelf.