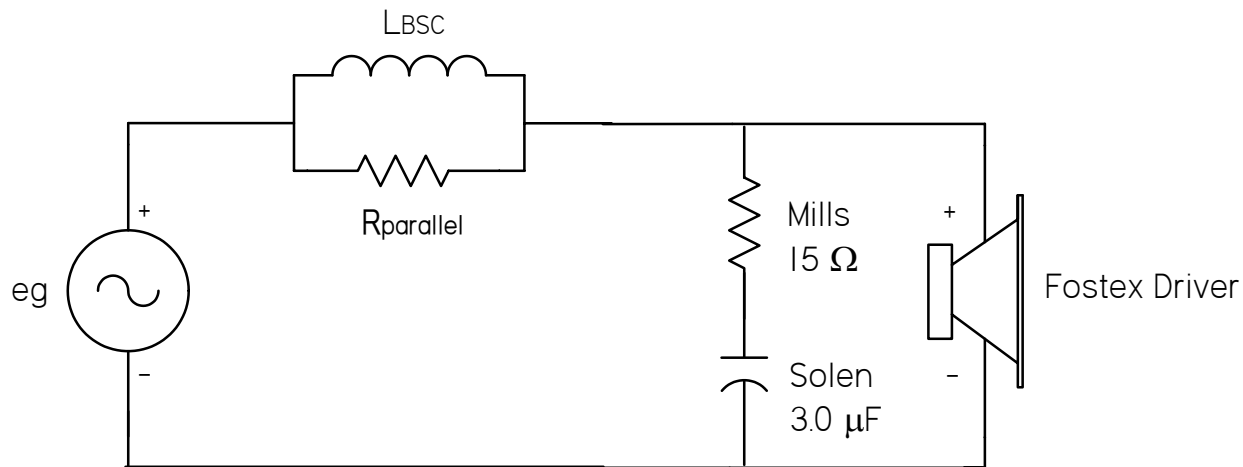


Fostex FE-206E or FE207E - Baffle Step Correction Circuit



| Fostex FE - 206E ML TL Design | | | Fostex FE - 207E ML TL Design | | |
|-------------------------------|------|---------|-------------------------------|------|---------|
| Rparallel | LBSC | | Rparallel | LBSC | |
| 10.00 | 3.00 | High DF | 7.00 | 2.10 | High DF |
| 9.00 | 2.70 | | 6.00 | 1.80 | |
| 8.00 | 2.40 | | 5.00 | 1.50 | |
| 7.00 | 2.10 | | 4.00 | 1.20 | |
| 6.00 | 1.80 | V | 3.00 | 0.90 | V |
| 5.00 | 1.50 | Low DF | 2.00 | 0.60 | Low DF |
| [ohms] | [mH] | | [ohms] | [mH] | |

Solid State Amps have very high damping factors DF so max correction recommended.
 Tube Amps have lower damping factors DF so required correction is typically lower.